

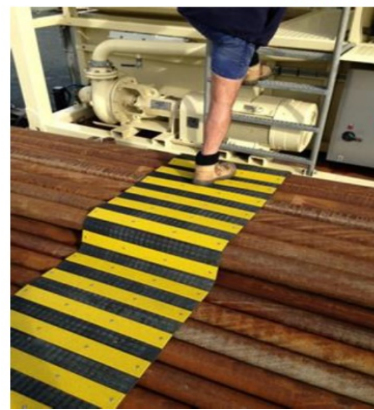
# FLEX-DECK



LONGITUDINAL



TRANSVERSE



Vigil Antislip Flex-Deck is a specifically engineered product which provides an excellent slip resistant surface while walking on pipes and uneven surfaces. Flex-Deck is:

- lightweight
- easy to use
- can be rolled up for compact storage
- available in two non-slip patterns
- a safe and secure pedestrian access

Uneven and irregular surfaces are potentially deadly, and demand special antislip protection. Flex Deck creates a safe, highly visible, and adaptable walkway almost anywhere.

	<b>LENGTH</b>	<b>WIDTH</b>	<b>WEIGHT</b>
<b>LFD-Longitudinal Flex-Deck</b>	Up to 2.40 m	Up to 1.00 m	14.5 Kg/m <sup>2</sup>
<b>TFD-Transverse Flex-Deck</b>	Up to 5.00 m	Up to 1.00 m	14.5 Kg/m <sup>2</sup>

# FLEX-DECK

## GRADE APPLICATION

<b>Industrial</b>	Applicable in most external areas where there may be spillage and/or soilage of lubricants.
<b>Offshore</b>	Ideal for areas where there is a high buildup of grease or oil. This surface is the most severe and is not affected by very heavy spillage and soilage of chemicals or lubricants.

## COLORS



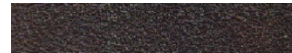
Safety Yellow (Standard for all Offshore & Industrial applications)



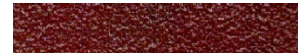
Royal Blue



Ochre



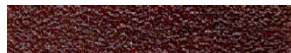
Slate/Black



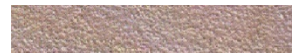
Rust



Tropical Green



Chocolate Brown



Platinum  
(also available in Off White)



Cardinal Red

## TECHNICAL SPECIFICATIONS

**Antislip Foundation** 4.0mm Marine Grade Aluminum

**Fabric Medium** Floating on steel foundation and integrated with a key coat of resin system

**Resin System** All layers hand laminated – not sprayed

Cured at optimum temperature and humidity- no oven use

Resistant to all solvents, petroleum products and acid solutions

Must not contain any pin-prick holes or bubbles

**Aggregate** Silicon Carbide (SiC), Moh's hardness rating of 9.2-9.5

**Aggregate Size** Industrial grade is 20 mesh

Offshore grade is 12/20 mesh matrix

**Warranty** 10 years